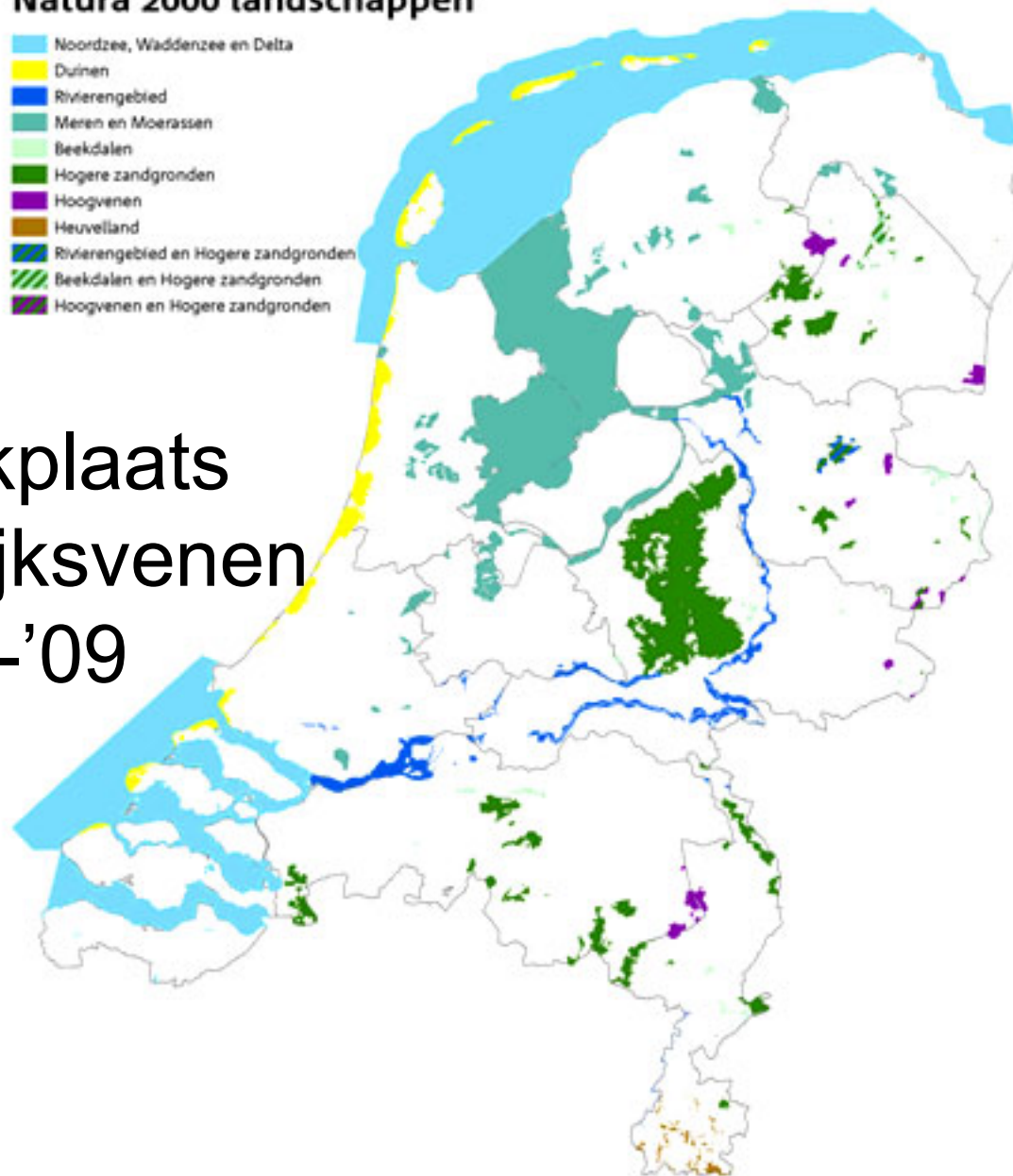


Natura 2000 landschappen

- Noordzee, Waddenzee en Delta
- Duinen
- Rivierengebied
- Meren en Moerassen
- Beekdalen
- Hogere zandgronden
- Hoogvenen
- Heuvelland
- Rivierengebied en Hogere zandgronden
- Beekdalen en Hogere zandgronden
- Hoogvenen en Hogere zandgronden



Veldwerkplaats
Engbertsdijksvenen
07-10-'09

Duitsland

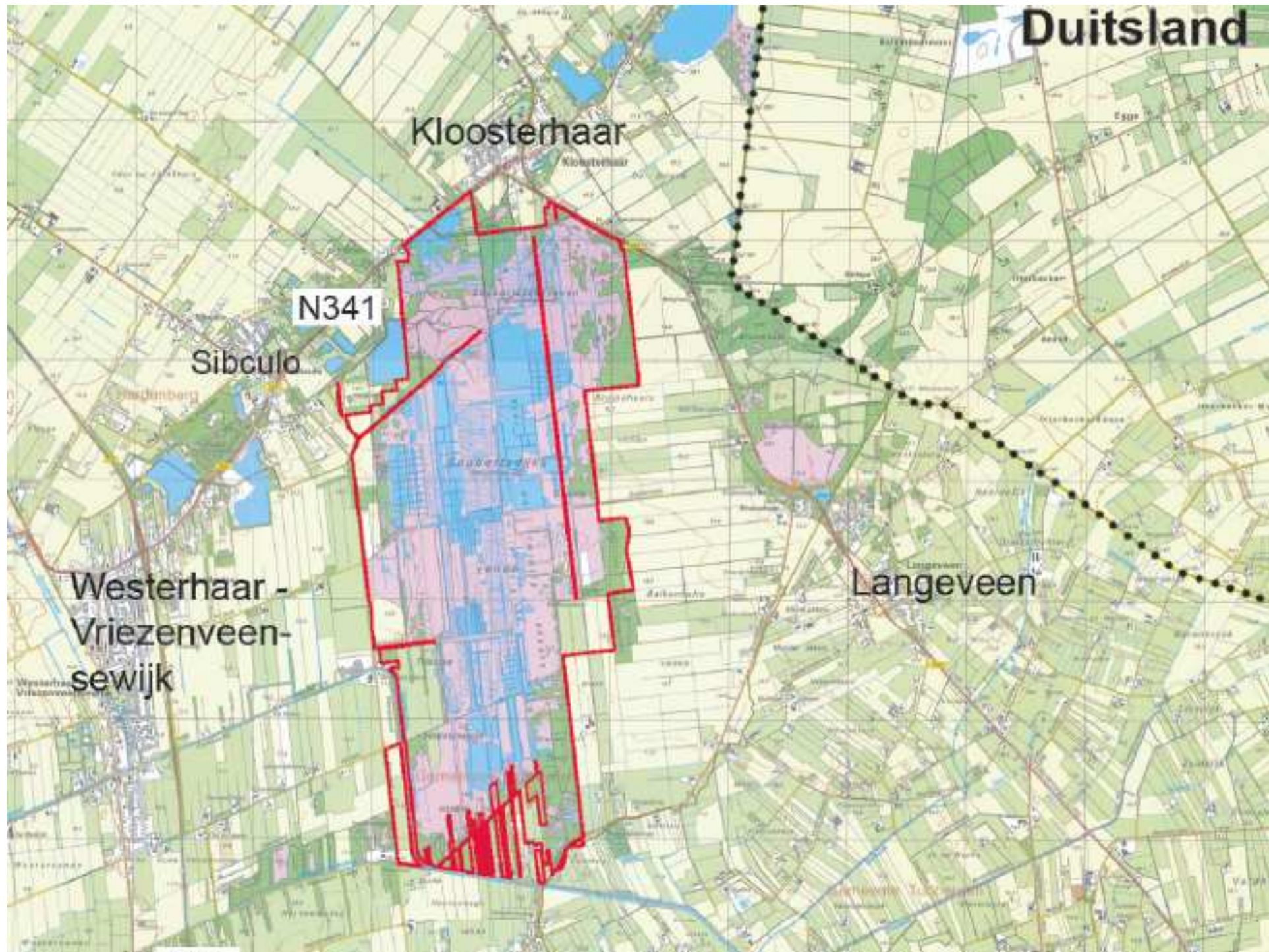
Kloosterhaar

N341

Sibculo

Westerhaar -
Vriezenveen-
sewijk

Langeveen





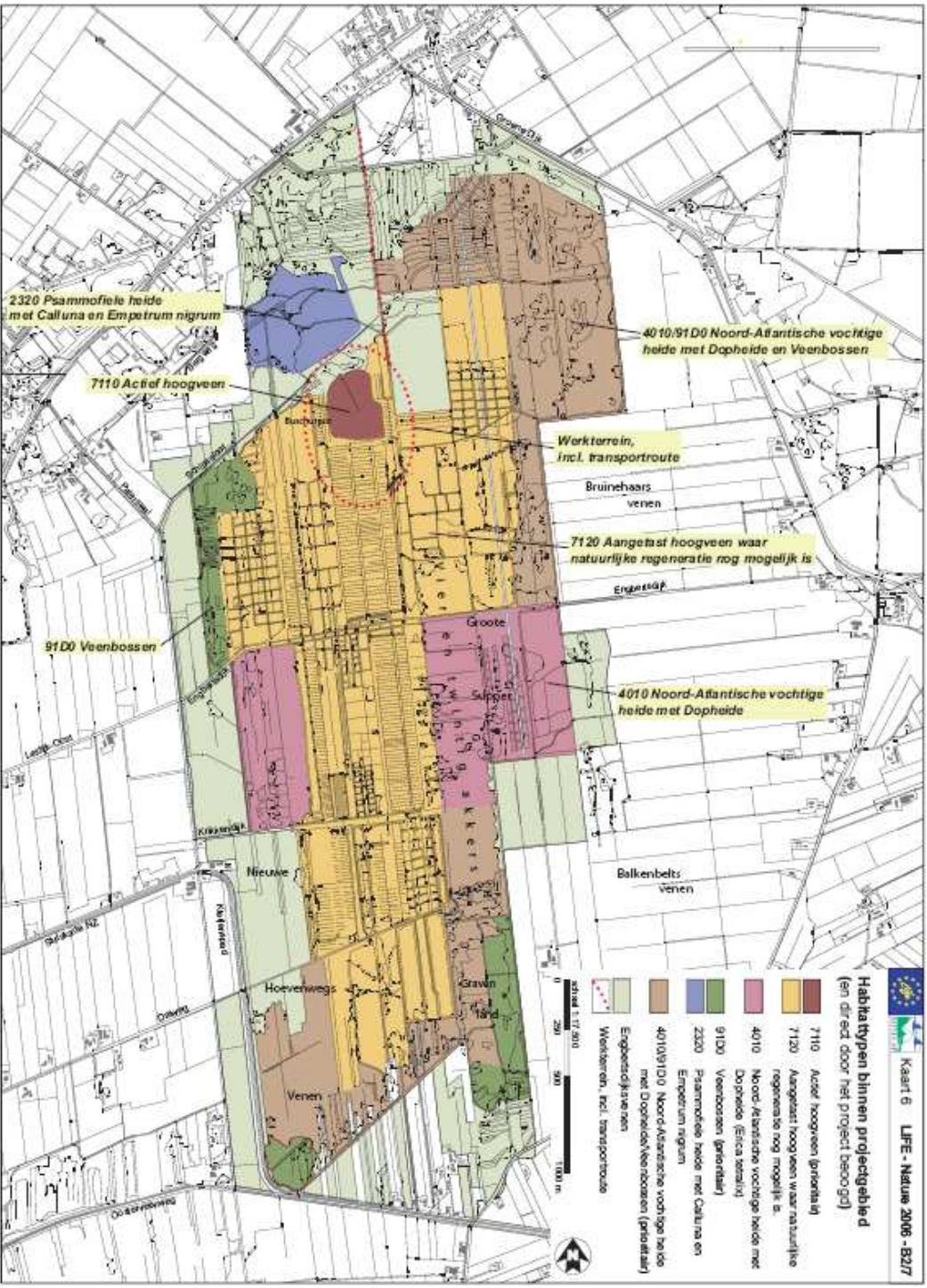


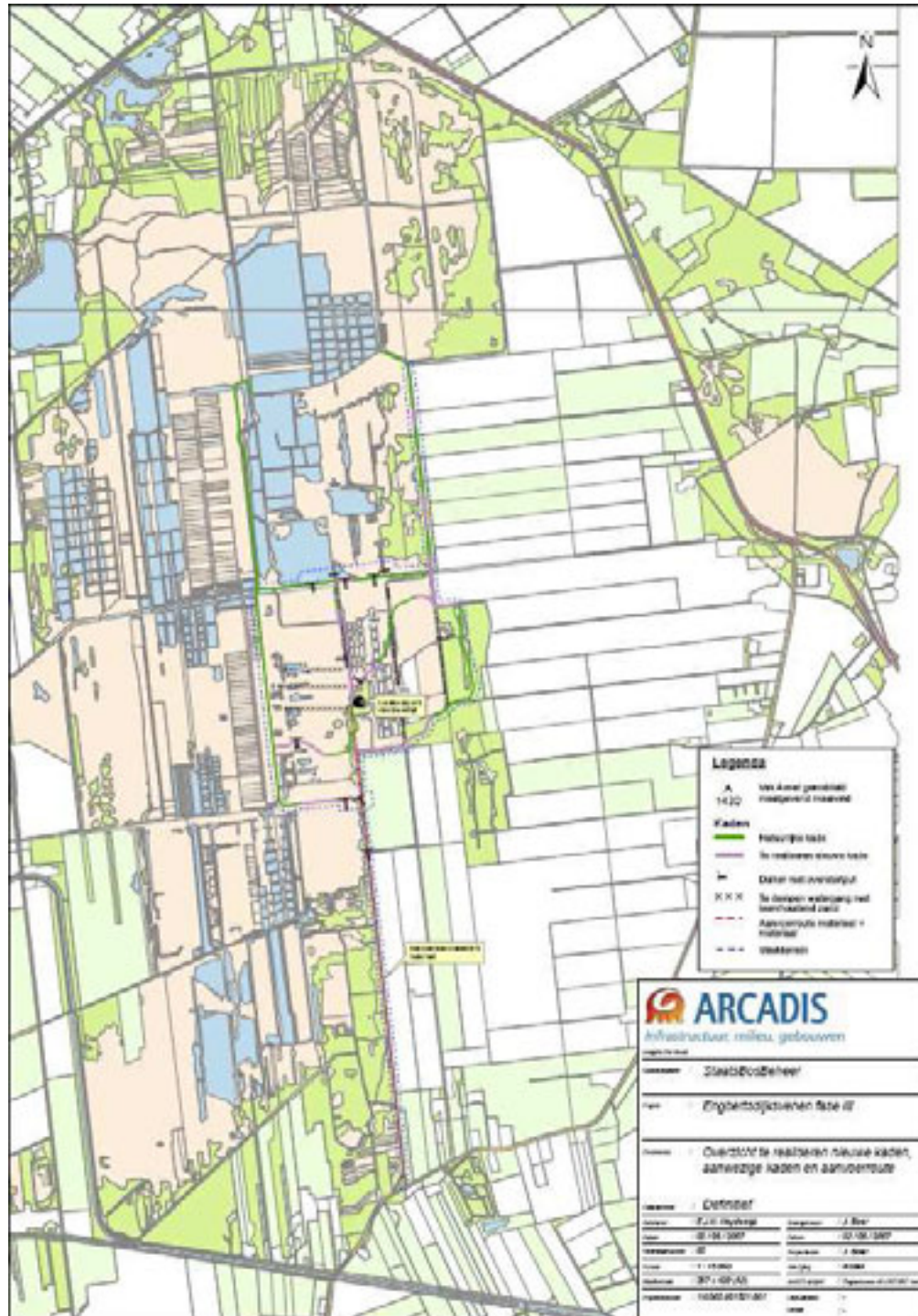


ERIOPHORUM VAGINATUM
(Eenrig wollegras)



0 500 1000 Meters





- Legenda**
- A 1430 Van A naar gebiedslijn
bestaande of te maken
 - Kaden
 - bestaande kade
 - te maken nieuwe kade
 - Dijk met overloopput
 - X X X De dijk met walwang met
bestaande dijk
 - Aan te leggen dijkwal +
walwang
 - — — — — Veldgrens

ARCADIS
 Infrastructuur, milieu, gebouwen

Opdrachtgever: StadsBeheer

Project: Engelspoorwijk fase II

Doelstelling: Overstroomgebied realiseren nieuwe kaden, aanwezige kaden en aanvoertuize

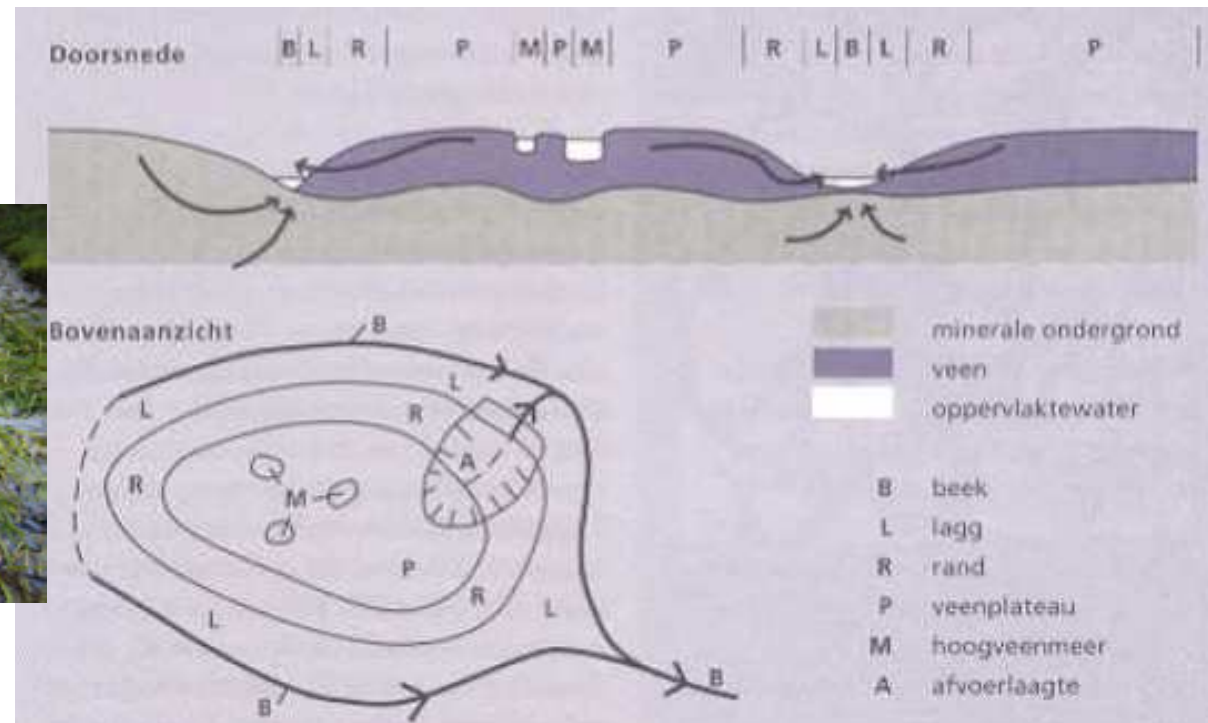
Ontwerper: Dierman

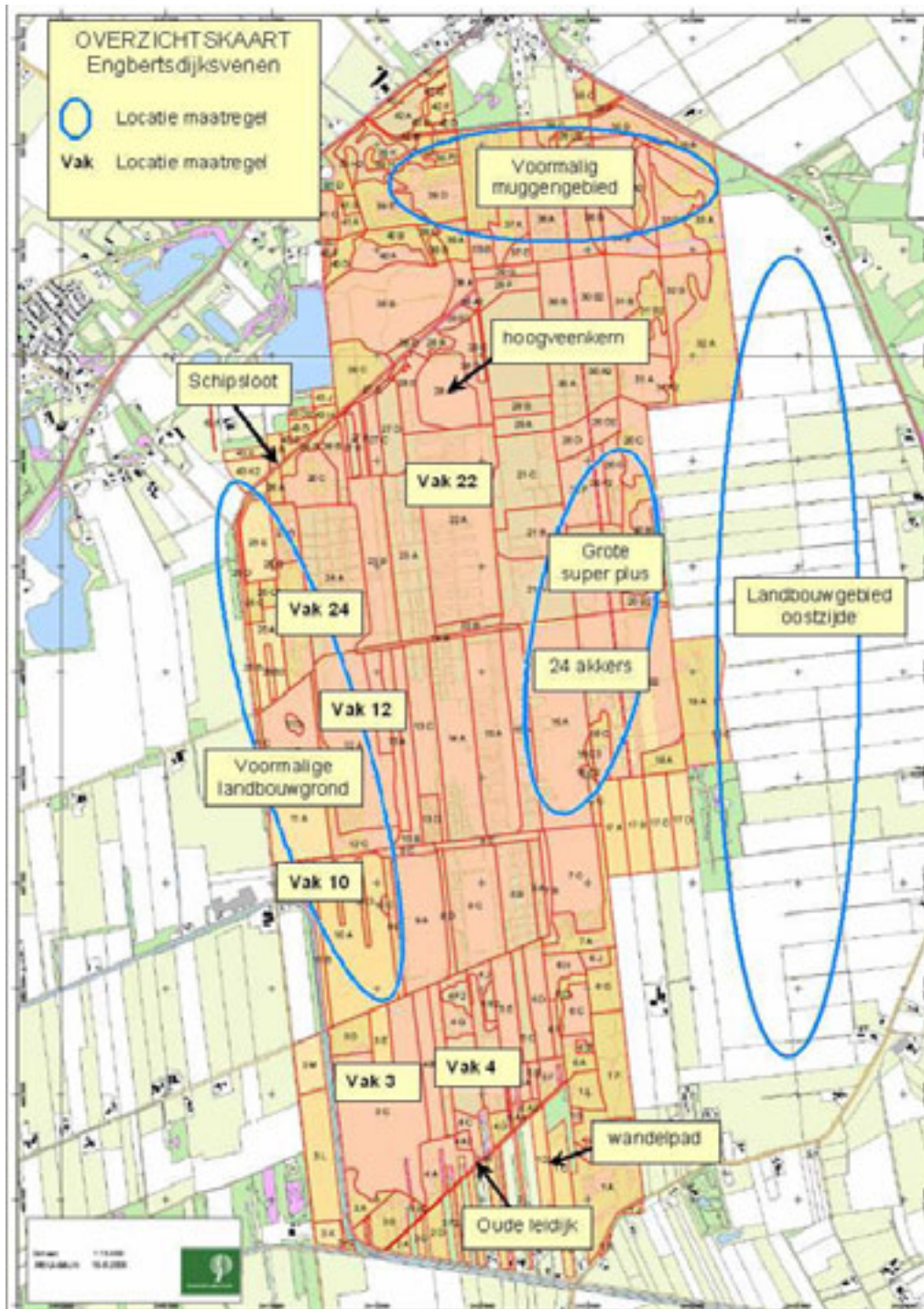
| | |
|----------------------------|----------------------------|
| Ontwerper: P.J.G. Dierman | Ontwerper: J. Buij |
| Datum: 02-06-2007 | Datum: 02-06-2007 |
| Opdrachtgever: StadsBeheer | Opdrachtgever: StadsBeheer |
| Project: Engelspoorwijk | Project: Engelspoorwijk |
| Adres: 3713 GP Lisse | Adres: 3713 GP Lisse |
| Telefoon: 030 451 51 51 | Telefoon: 030 451 51 51 |
| Website: www.arcadis.nl | Website: www.arcadis.nl |

| Grootte PQ's: 5x5 meter | | | | | | | | | | | | | | | | | | |
|--|----------|----------|----------|----------|----------|----------|----------|----------|----------|----------|----------|----------|----------|----------|----------|----------|----------|----------|
| | 2 | 2 | 2 | 2 | 2 | 2 | 2 | 2 | 2 | 2 | 2 | 2 | 2 | 2 | 2 | 2 | 2 | 2 |
| | 0 | 0 | 0 | 0 | 0 | 0 | 0 | 0 | 0 | 0 | 0 | 0 | 0 | 0 | 0 | 0 | 0 | 0 |
| | 0 | 0 | 0 | 0 | 0 | 0 | 0 | 0 | 0 | 0 | 0 | 0 | 0 | 0 | 0 | 0 | 0 | 0 |
| | 8 | 9 | 8 | 9 | 8 | 9 | 8 | 9 | 8 | 9 | 8 | 9 | 8 | 9 | 8 | 9 | 8 | 9 |
| Bedekking PQ: | 1 | 1 | 2 | 2 | 3 | 3 | 4 | 4 | 5 | 5 | 6 | 6 | 7 | 7 | 8 | 8 | 9 | 9 |
| Totaal % | 95 | 95 | 95 | 90 | 95 | 90 | 95 | 90 | 95 | 100 | 95 | 95 | 95 | 98 | 95 | 95 | 100 | 95 |
| Struiklaag (lage) | | | | | | 1 | | | | | | | | | 15 | 10 | | |
| Kruidlaag % | 90 | 90 | 85 | 75 | 95 | 75 | 95 | 80 | 95 | 90 | 85 | 90 | 85 | 70 | 80 | 85 | 95 | 95 |
| Moslaag % | 5 | 10 | 10 | 40 | 5 | 25 | 25 | 15 | 50 | 50 | 35 | 60 | 50 | 55 | 25 | 30 | 20 | 15 |
| Hoogte max. cm | | 120 | | 125 | | 120 | | 120 | | 120 | | 125 | | 120 | | 110 | | 110 |
| Hoogte gem. cm | | 60 | | 50 | | 40 | | 60 | | 55 | | 50 | | 30 | | 40 | | 40 |
| | | | | | | | | | | | | | | | | | | |
| Plantensoorten PQ Braun Blanquet | 1 | 1 | 2 | 2 | 3 | 3 | 4 | 4 | 5 | 5 | 6 | 6 | 7 | 7 | 8 | 8 | 9 | 9 |
| Pijpenstrootje <i>Molinia caerulea</i> | 5 | 4 | 4 | 3 | 3 | 3 | 4 | 4 | 2b | 3 | 2a | 3 | 2a | 2b | 3 | 3 | 4 | 5 |
| Pitrus <i>Juncus effusus</i> | | | | | | | | | | | | | | | | | | |
| Struikhei <i>Calluna vulgaris</i> | 2a | 2a | 1 | 1 | 1 | 2a | | r | 2a | 2a | 2a | 2a | | | 2b | 2a | r | + |
| Dophei <i>Erica tetralix</i> | 1 | + | 2m | 1 | 2b | 2b | 2a | 1 | 4 | 2b | 2b | 2b | 3 | 3 | 2a | 1 | 2a | 2a |
| Kraaihei <i>Empetrum nigrum</i> | | | | + | | | | | | | | | | | 2m | 2a | | |
| Lavendelhei <i>Andromeda polifolia</i> | | | 1 | 2m | | r | | | | | + | r | 2m | 2m | 2m | 1 | | |
| Kleine veenbes <i>Vaccinium oxycoccos</i> | | | r | | | | | r | | | | | r | | | | | |
| Rode bosbes <i>Vaccinium vitis-idaea</i> | | | r | | | | | | | | | | | | | | | |
| Zachte berk <i>Betula pubescens</i> | r | r | | | r | r | | | | | | r | r | | 2b | 2a | | + |
| Sporkehout <i>Rhamnus fragula</i> | | r | | | | | r | r | | r | | | | | | | | |
| Eenaarig wollegras <i>Eriophorum vaginatum</i> | r | + | 2m | + | 1 | + | 1 | 1 | 2m | + | 2a | 1 | 2a | 2a | + | 1 | + | + |
| Veenpluis <i>Eriophorum angustifolium</i> | 1 | | + | | 1 | + | + | r | 1 | + | 1 | + | 1 | 2m | + | 1 | + | + |
| Smalle stekelvaren <i>Dryopteris carthusiana</i> | r | + | r | r | | | + | + | | | | + | | | | | | |
| Witte snavelbies <i>Rhynchospora alba</i> | | | | | | r | | | | | | | | | | | | |
| Kleine zonnedauw <i>Drosera intermedia</i> | | | | | | | | | | | | | | | | | | |
| | | | | | | | | | | | | | | | | | | |
| Hoogveenveenmos <i>Sphagnum magellanicum</i> | r | 1 | | | | | | | 1 | 1 | 1 | 2m | 2b | 3 | 1 | 2m | r | + |
| Wrattig veenmos <i>Sphagnum papillosum</i> | r | | 2a | + | r | + | + | r | + | + | + | r | r | + | + | 2m | | |
| Zacht veenmos <i>Sphagnum tenellum</i> | r | + | r | r | r | r | + | + | r | r | | 1 | r | + | r | | | r |



Lenshoogveen ongestoord







Veldwerkplaats Engbertsdijksvenen

- Is herstel op landschapsschaal mogelijk?
- Draagt compartimentering daar aan bij?
- Is in het randenbeheer winst te boeken?

