



De Doorbraak

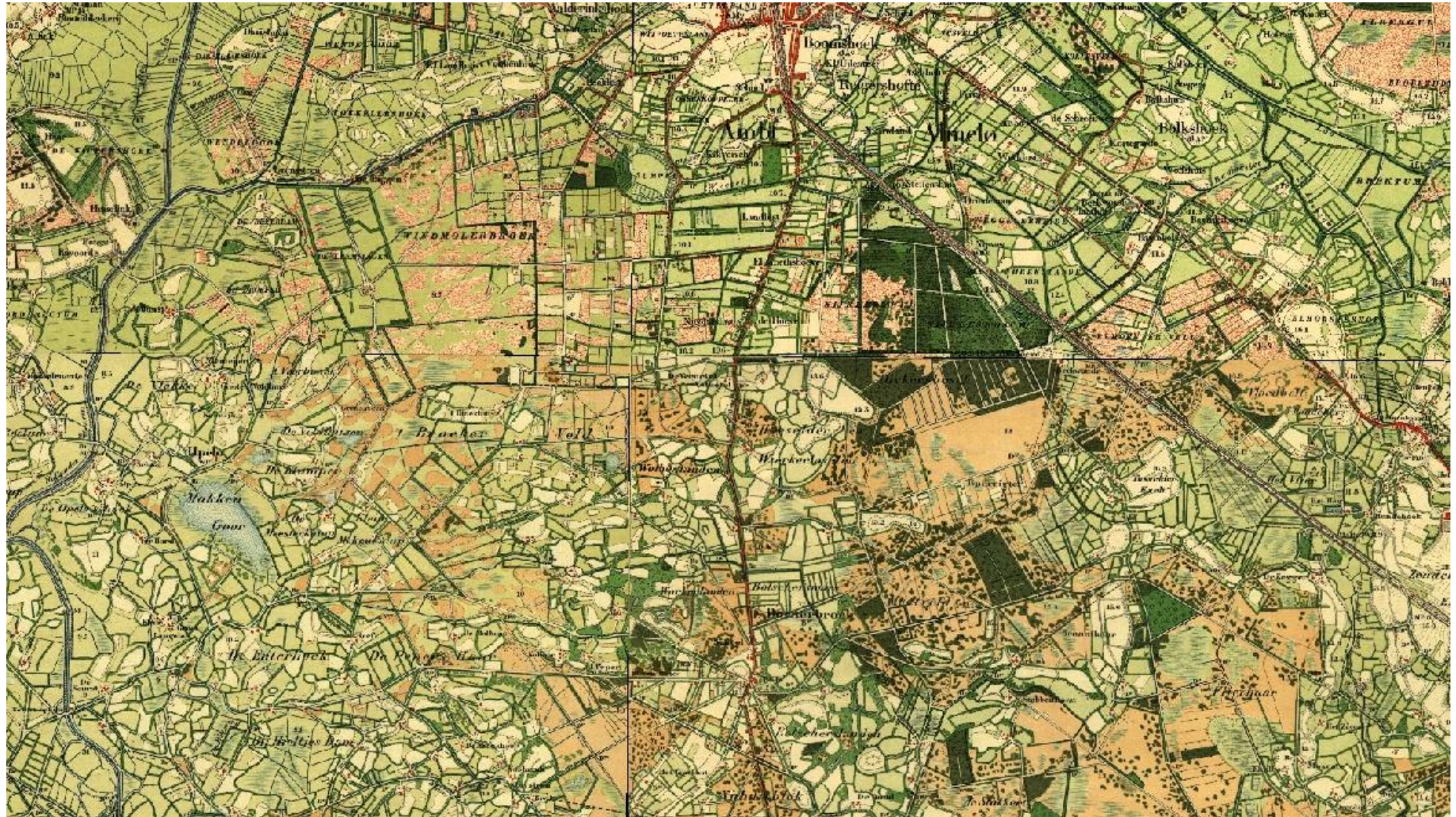
Inhoud

- Achtergrond
- Beheer
- Natuurwaarden
- Watercrassula problematiek

Achtergrond

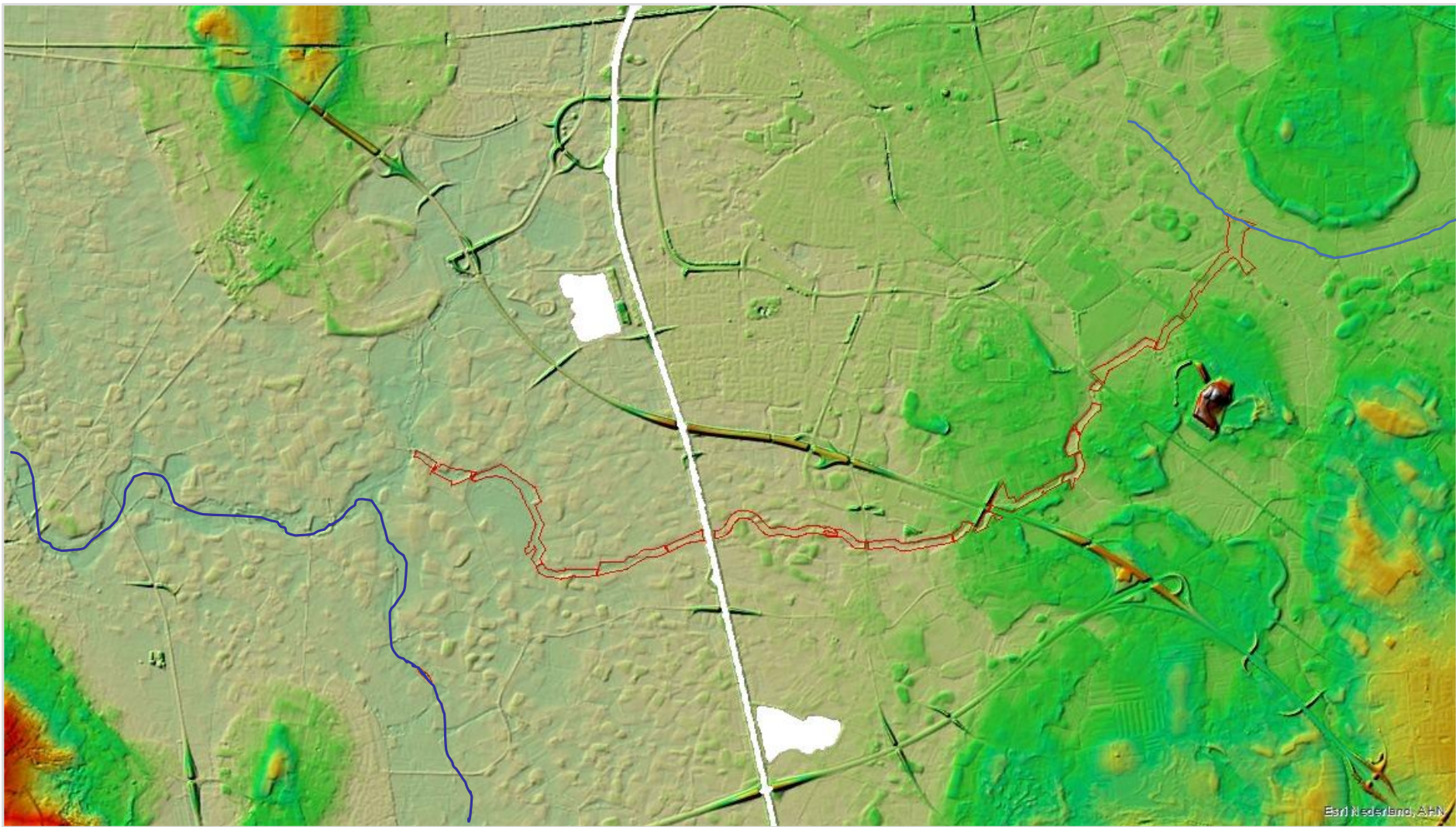
- Waterveiligheid
- Ecologische hoofdstructuur NNN
- 2005 begonnen 2016 oplevering
- 13 kilometer lengte
- Gem. 75 meter breed
- 97 hectare groot

1900









Esri Nederland, AHN















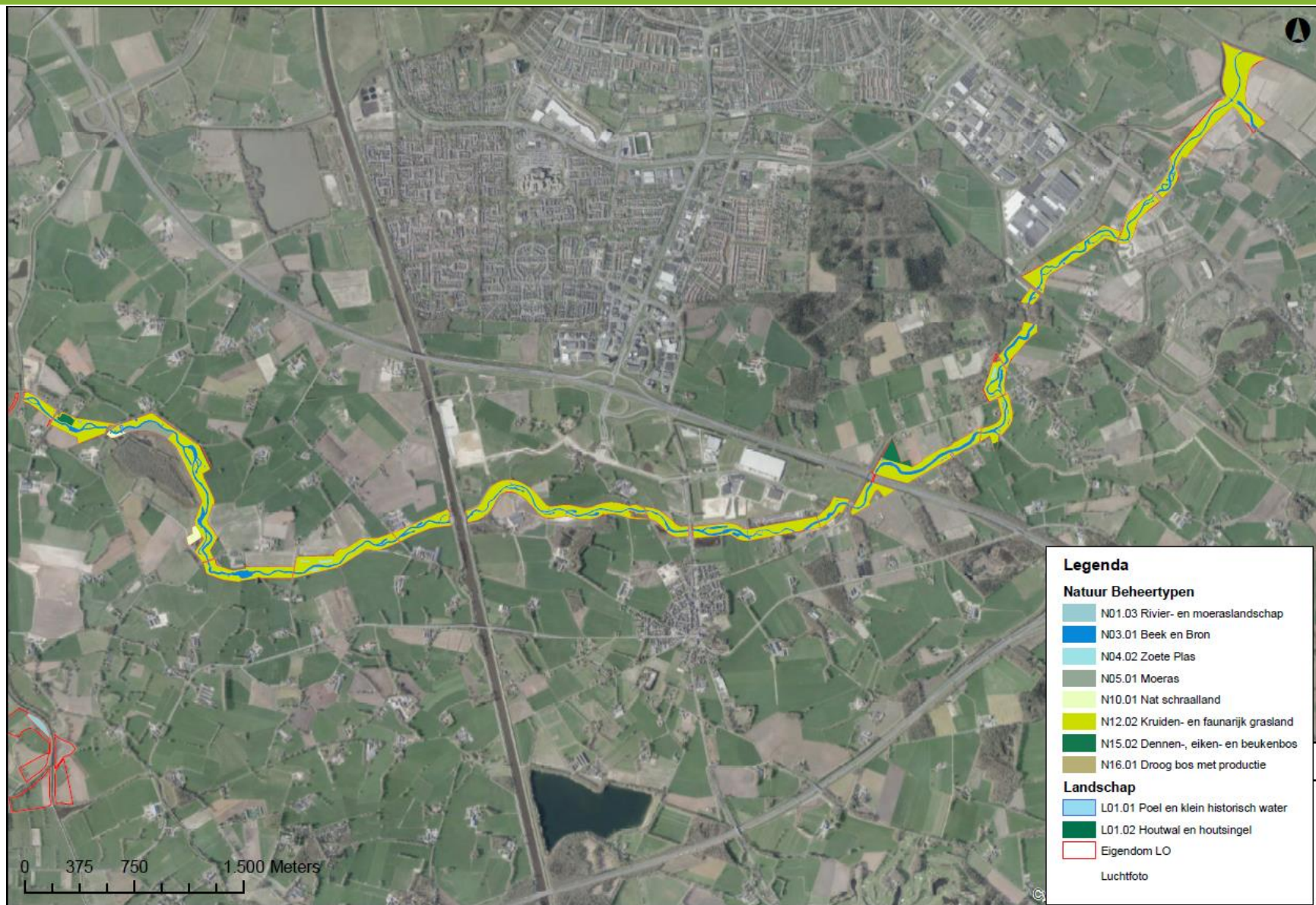




Beheer

- Begrazing paarden en runderen: Connemara pony en Brandrode runderen
- 3 beheereenheden
- Aanvullend maaien en bosopslag afzetten
- Droge deel: LO
- Natte deel: WVS















Krt1, opn4_003





















Overig beheer: toezicht







Natuurwaarden

- Flora





kleine zonnedauw



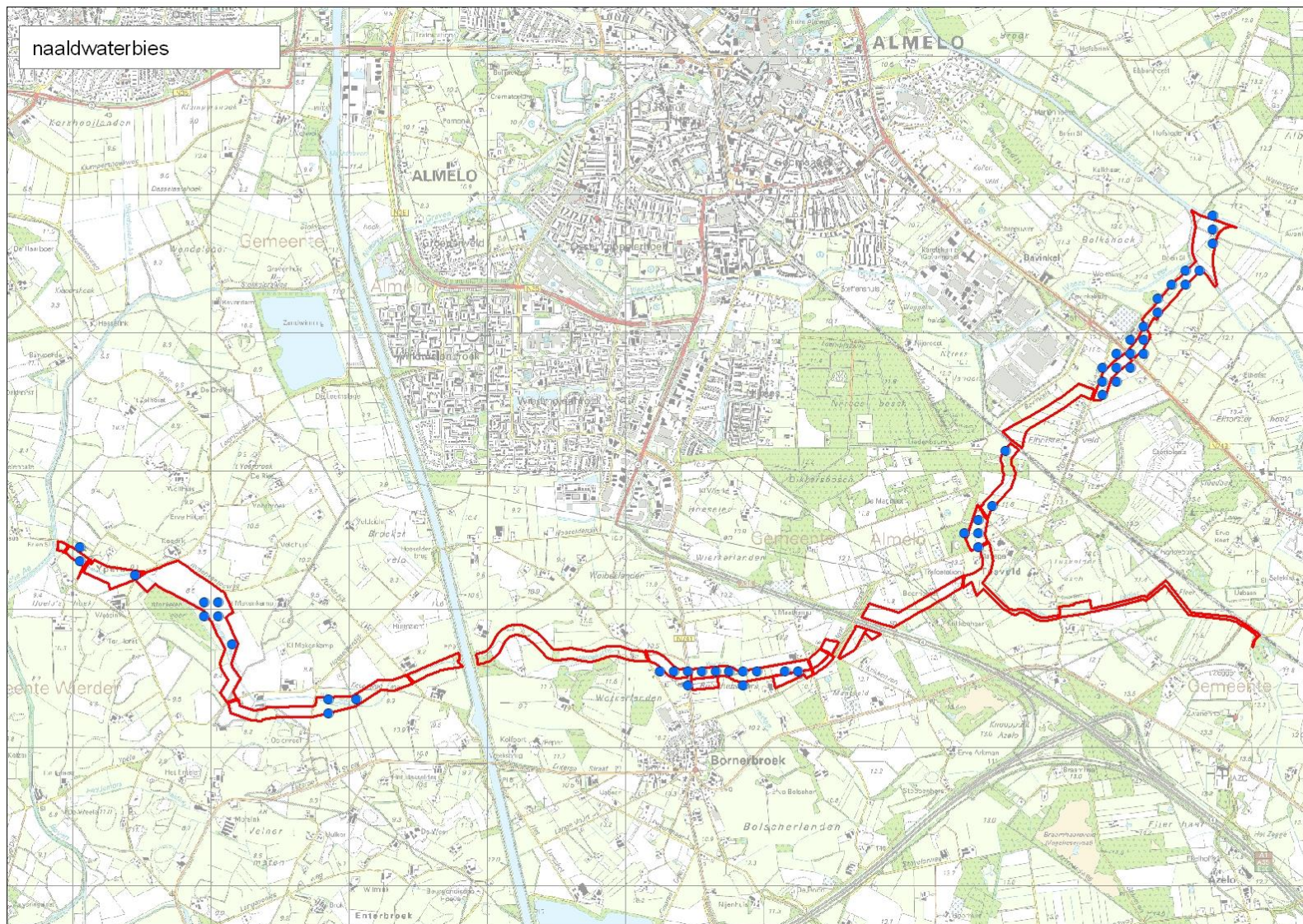








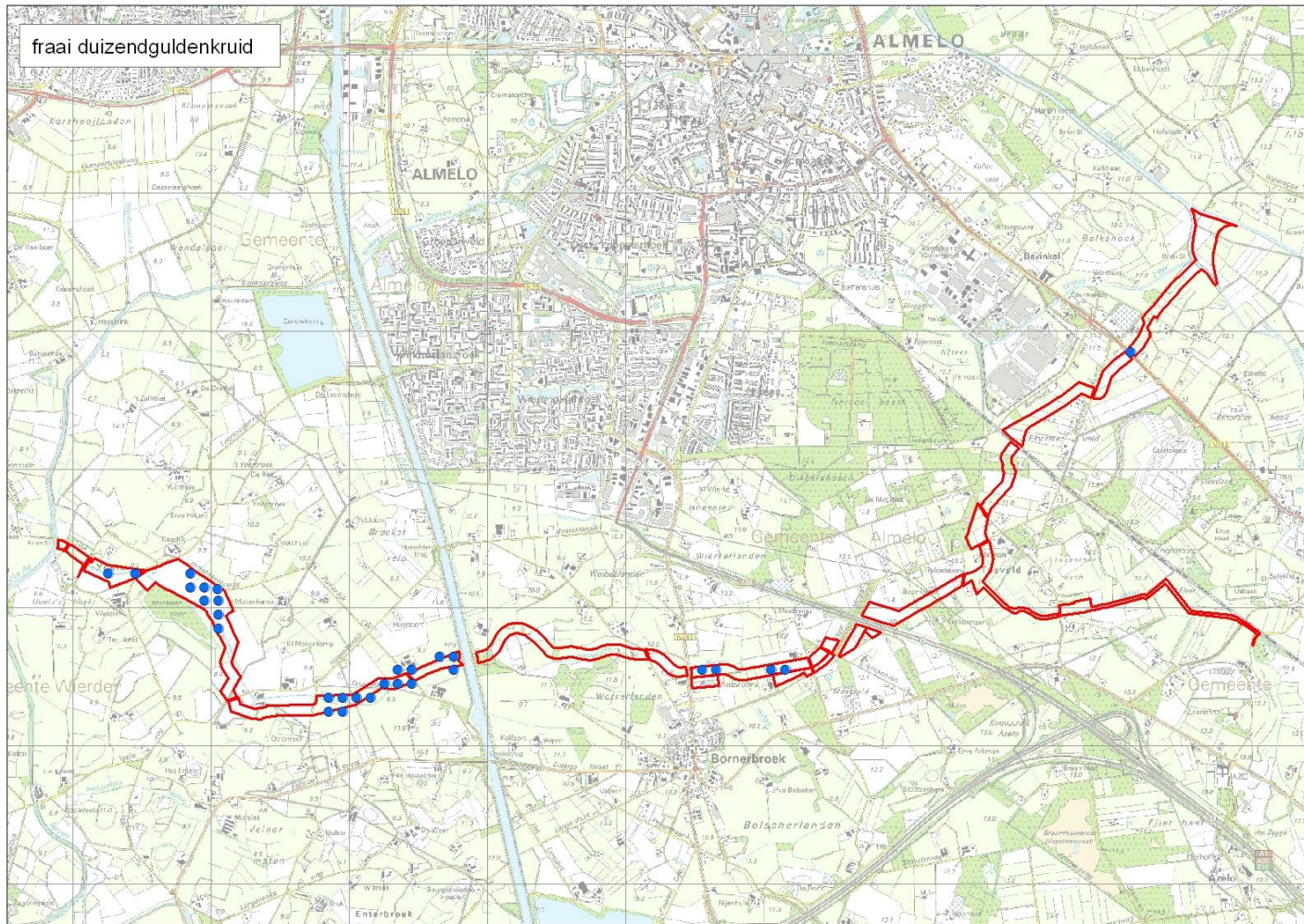
naaldwaterbies













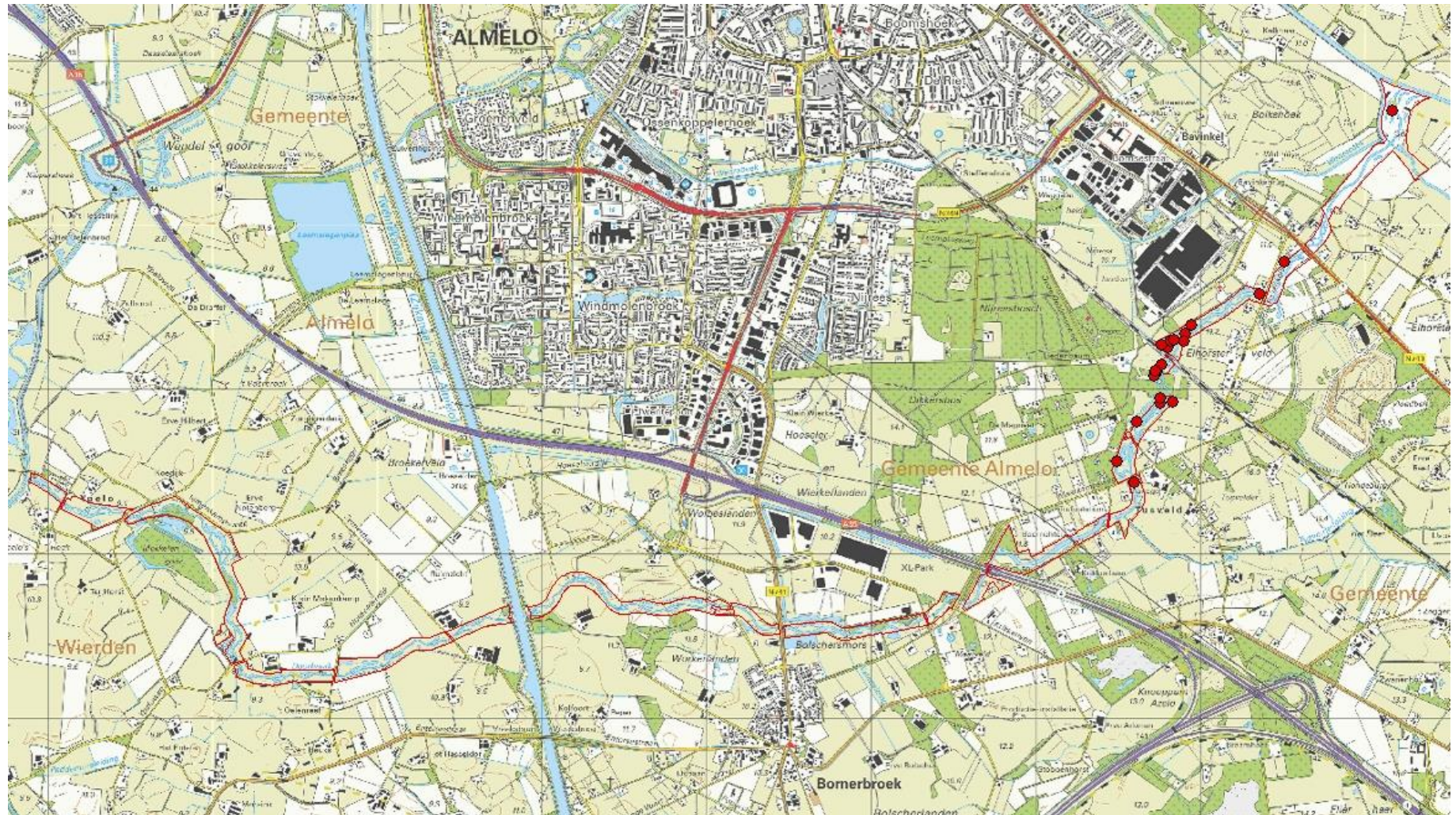
Natuurwaarden

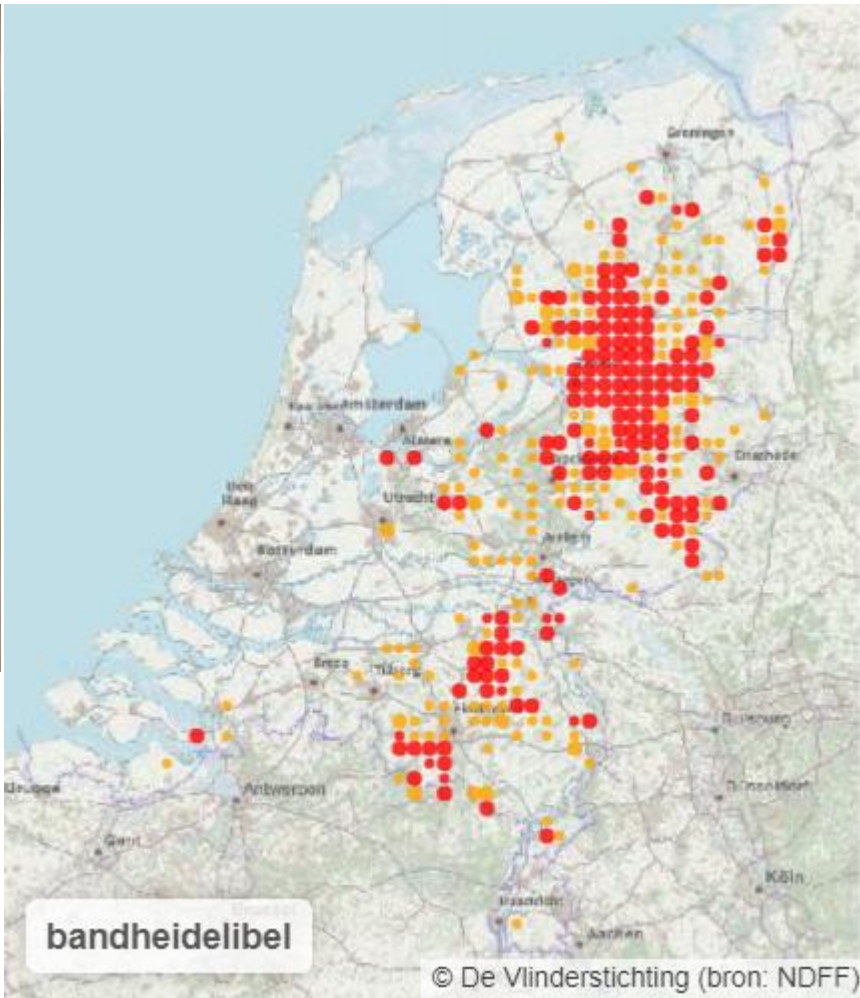
- Fauna: Libellen, dagvlinders, broedvogels (pioniers)



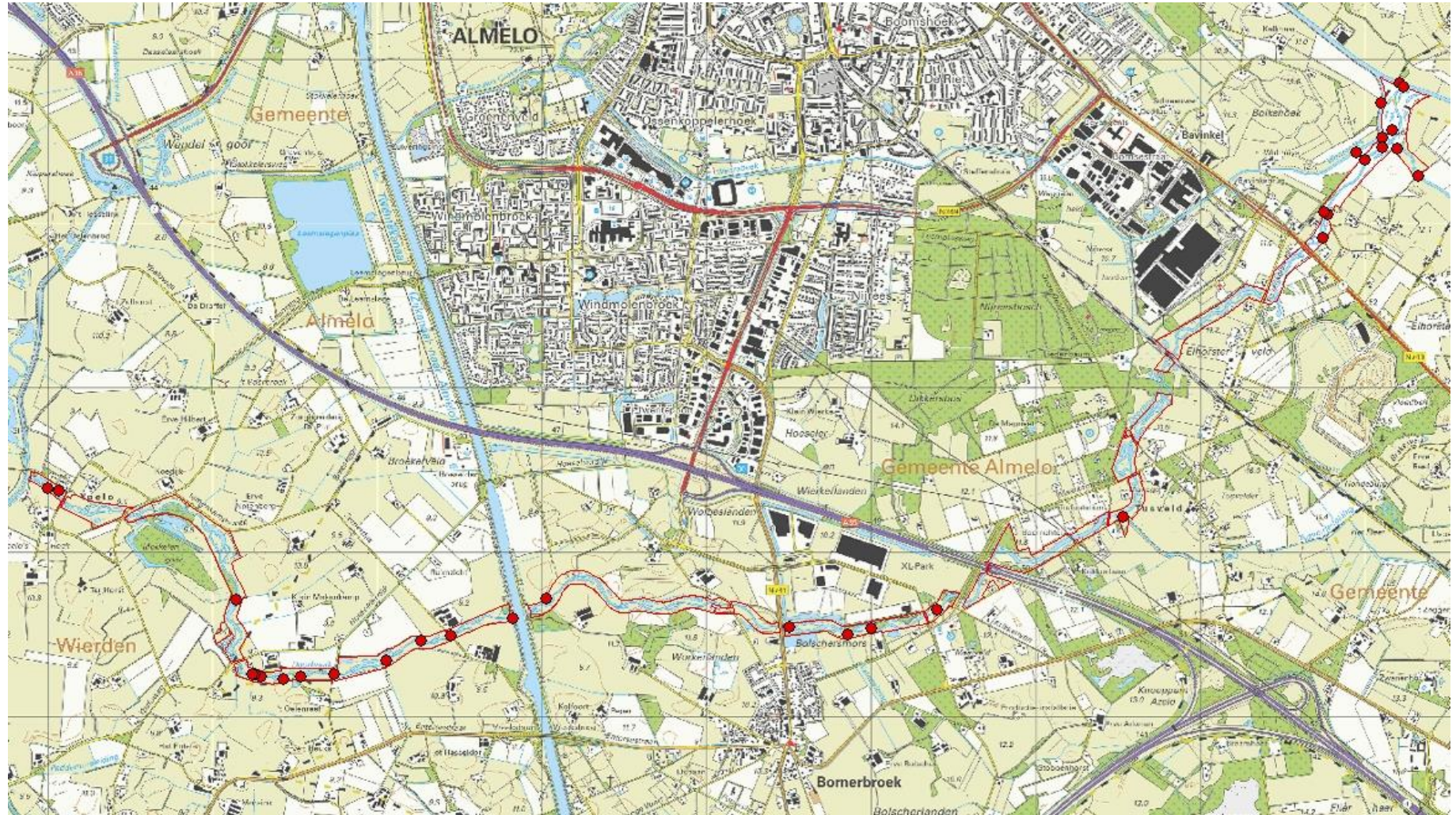


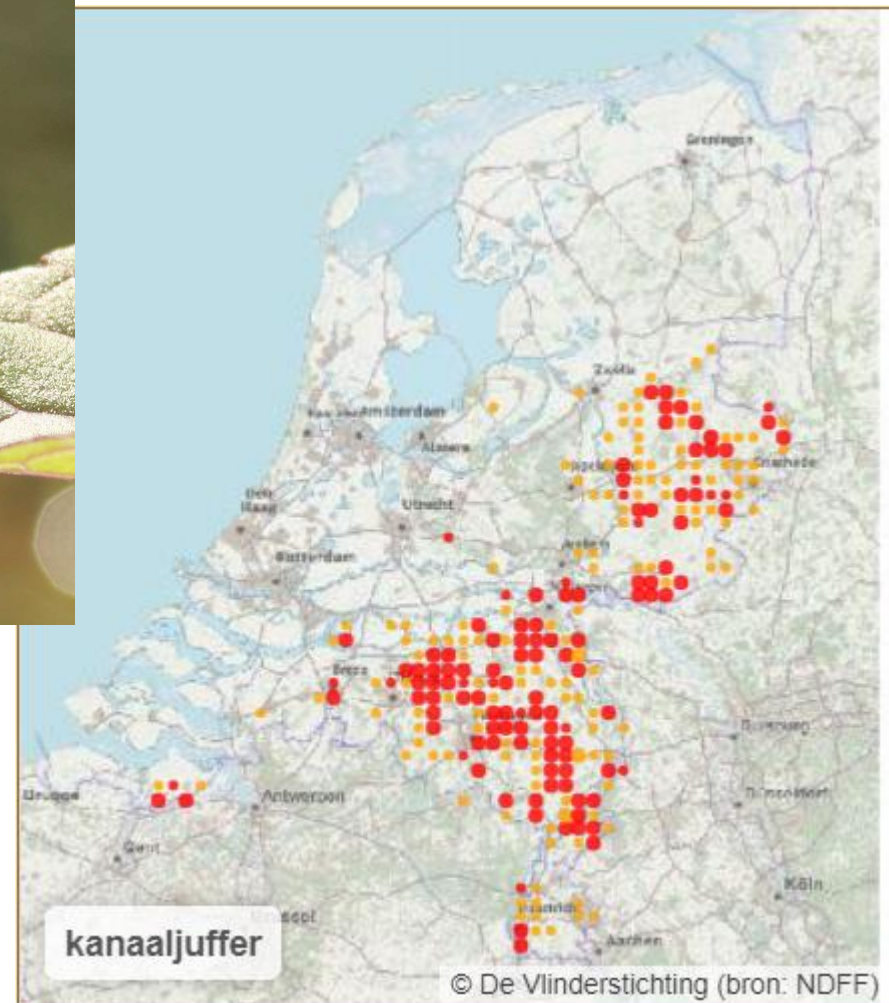
- Bandheidelibel



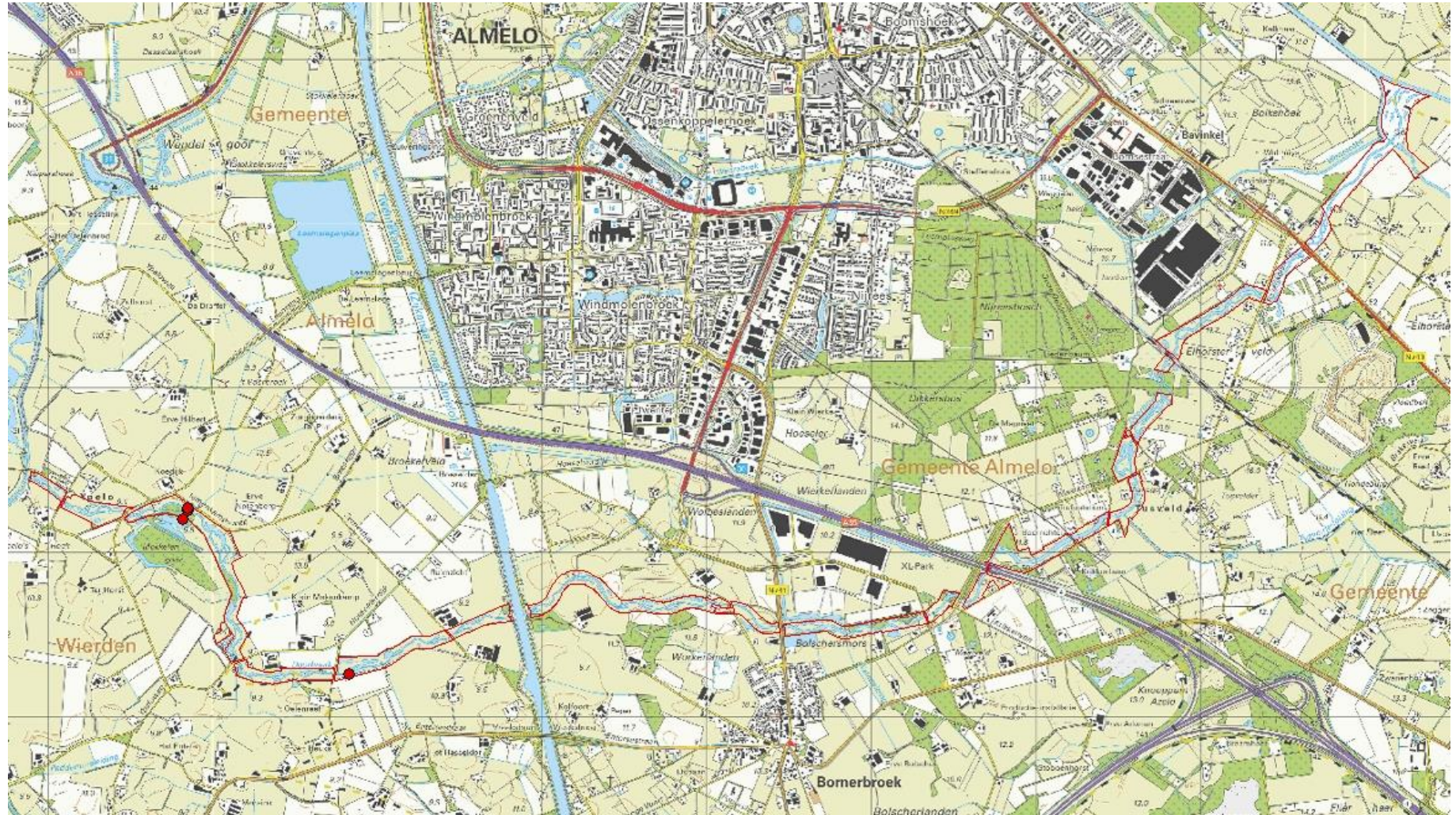


- Kanaaljuffer

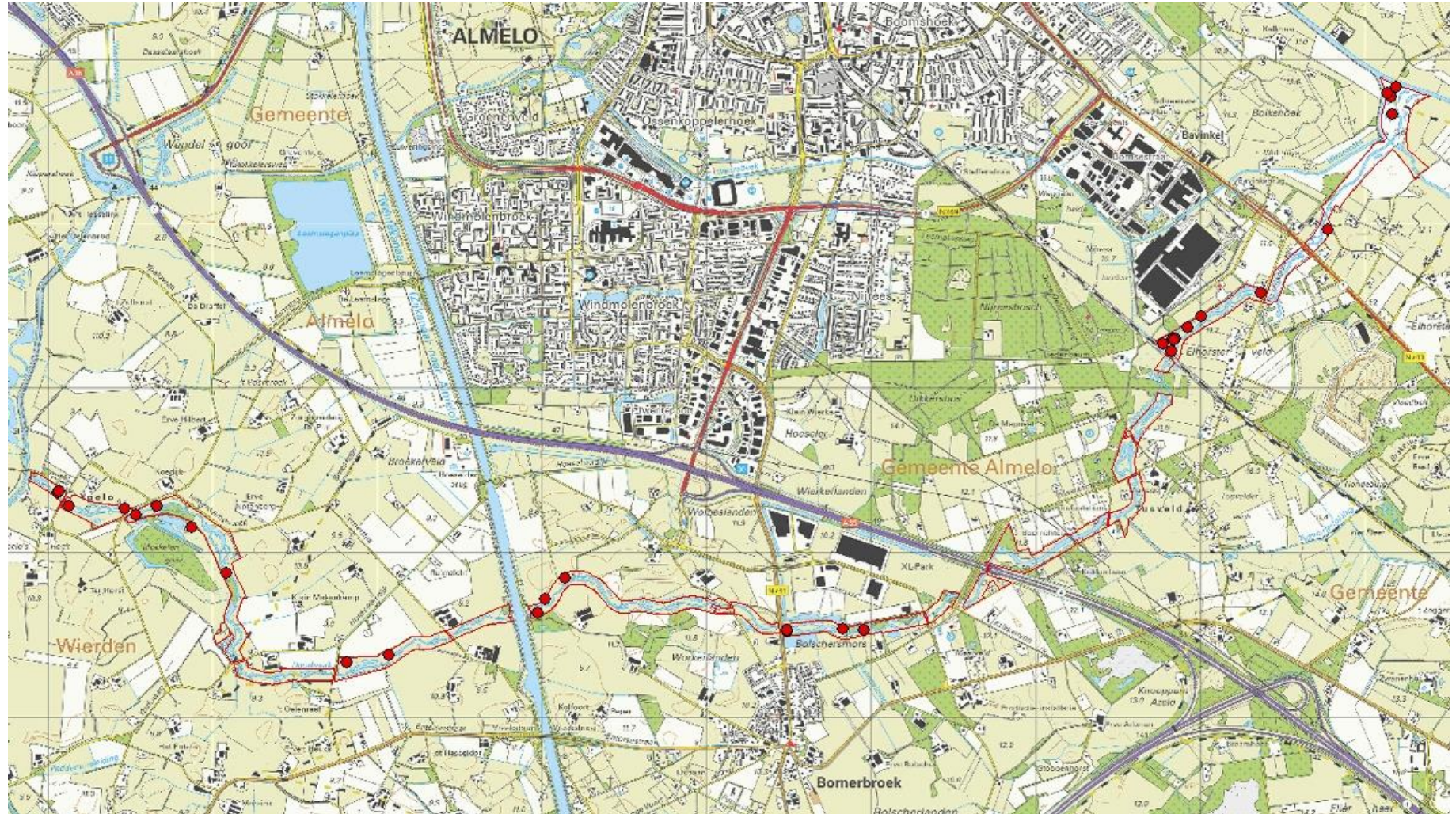




- Glassnijder



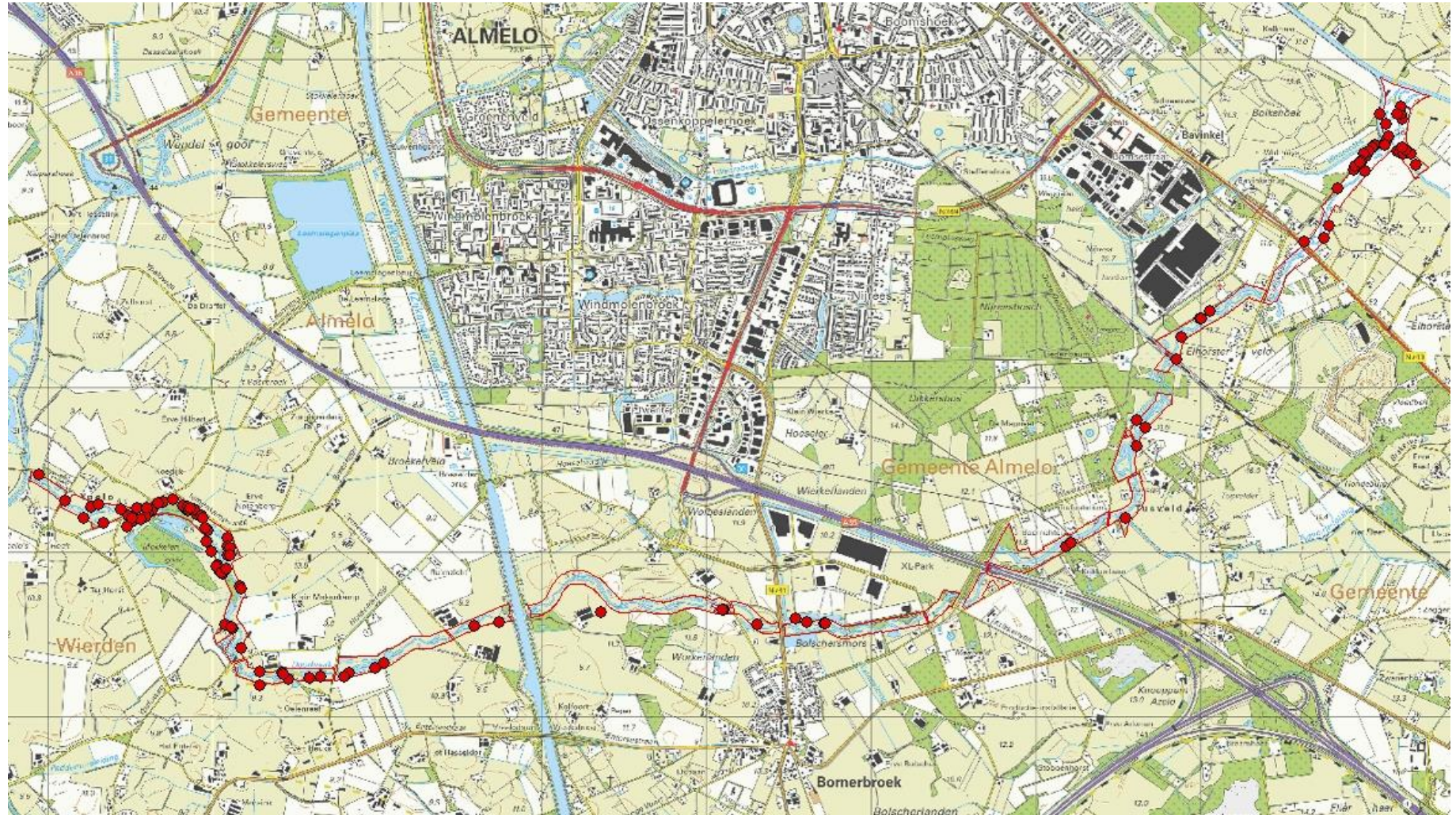
- Tengere grasjuffer



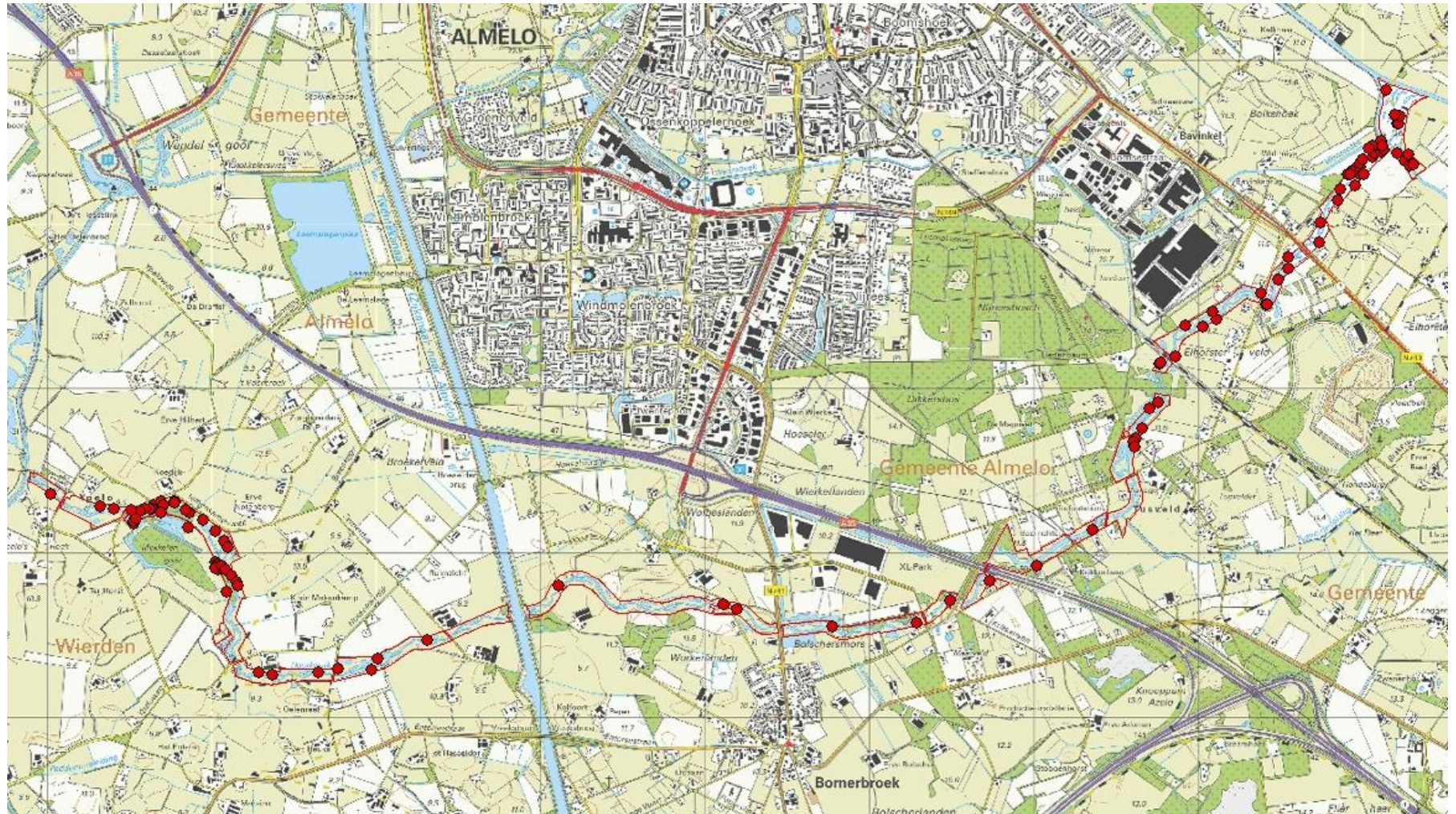




- Hooibeestje



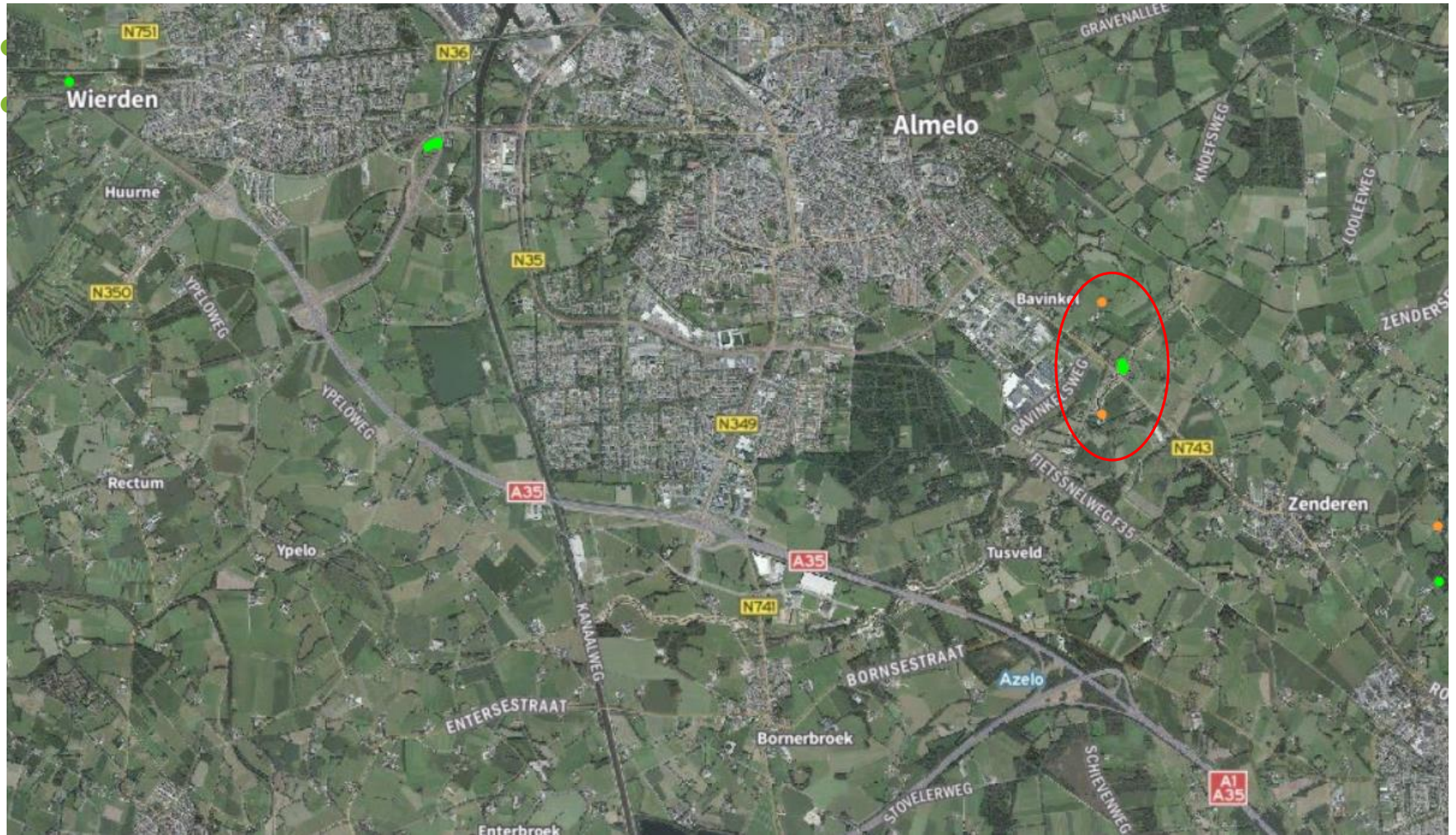
- Icarusblauwtje



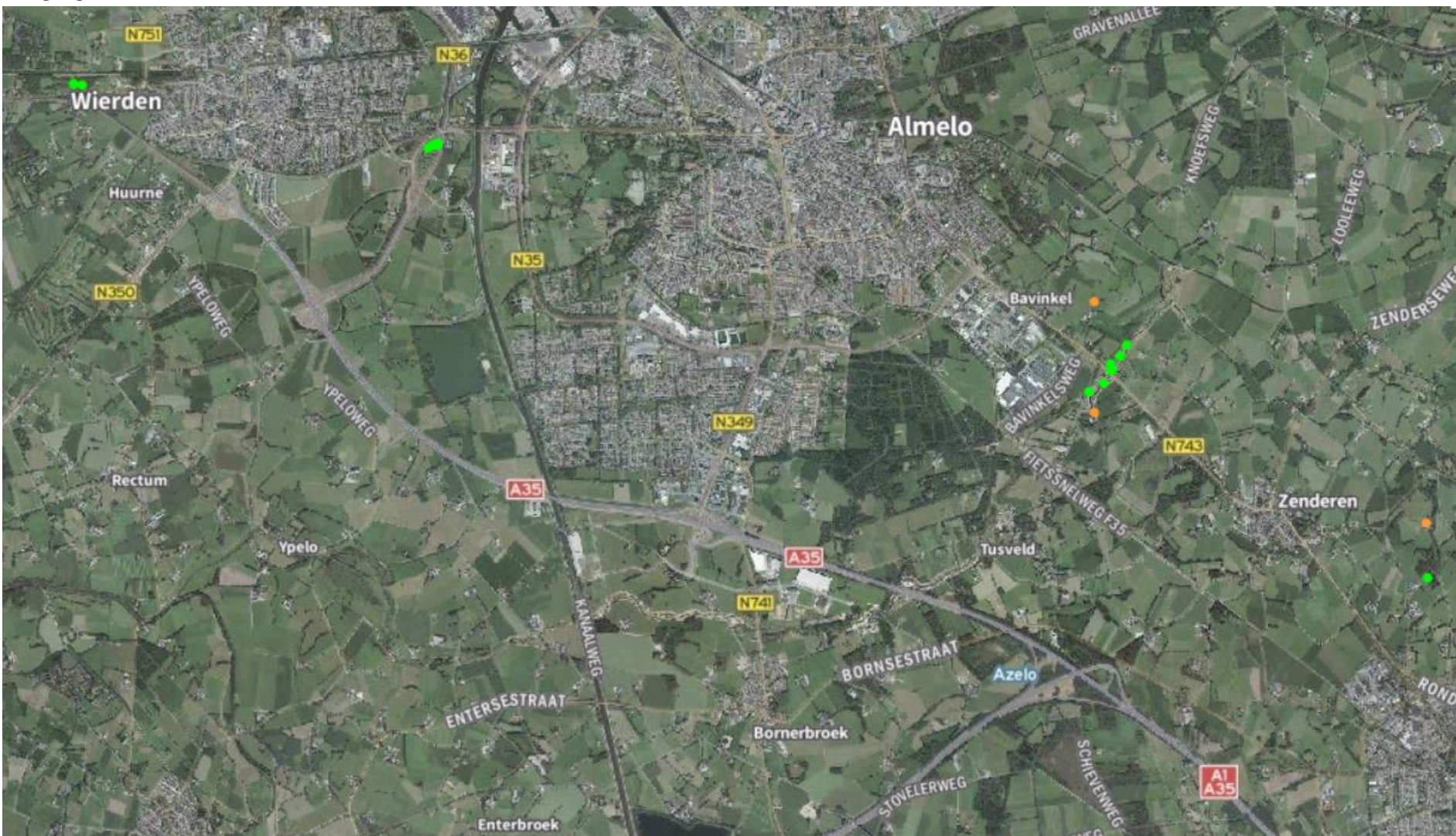




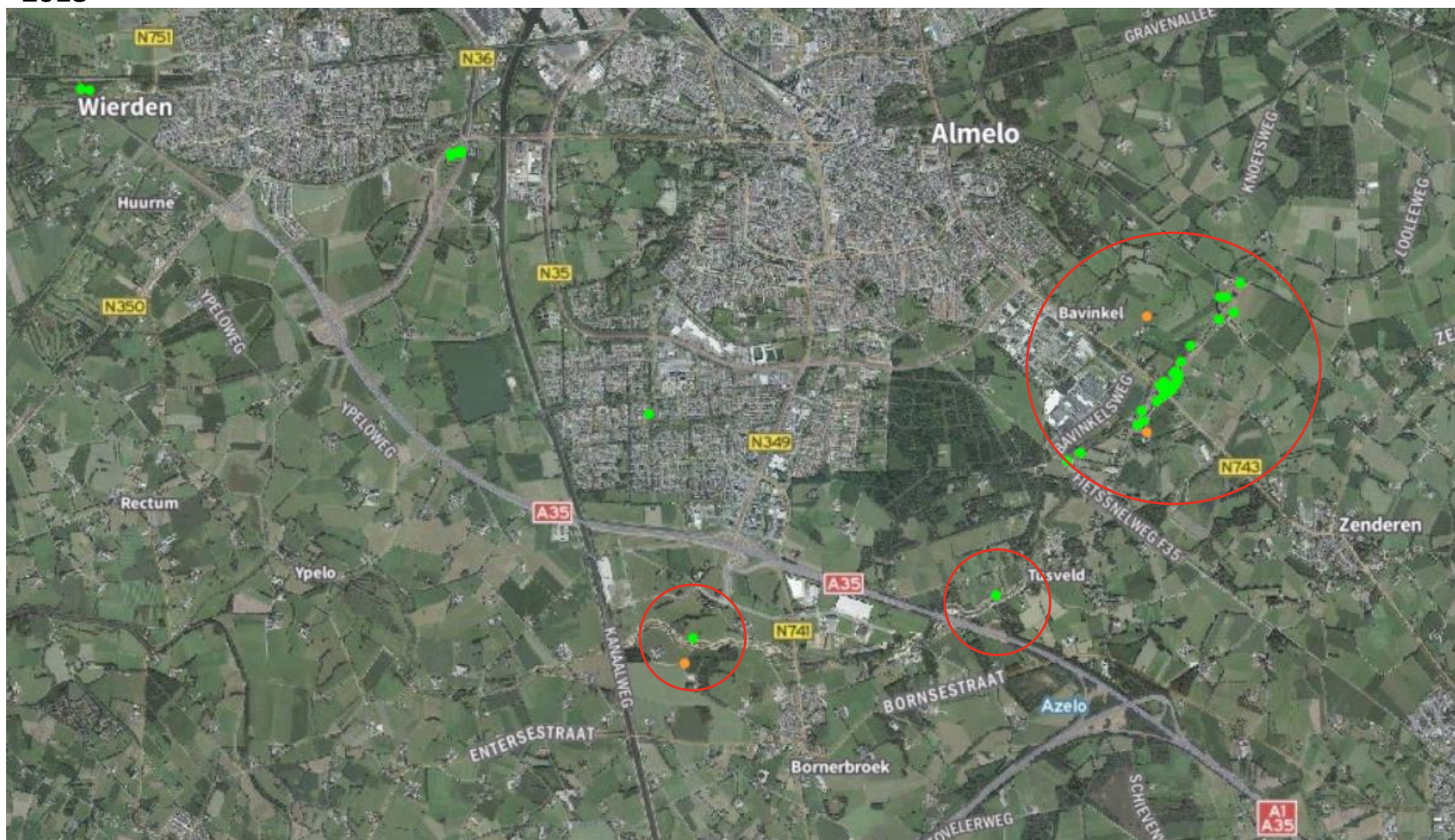
Watercrassula



2016



2018



30-05-2017



23-08-2018



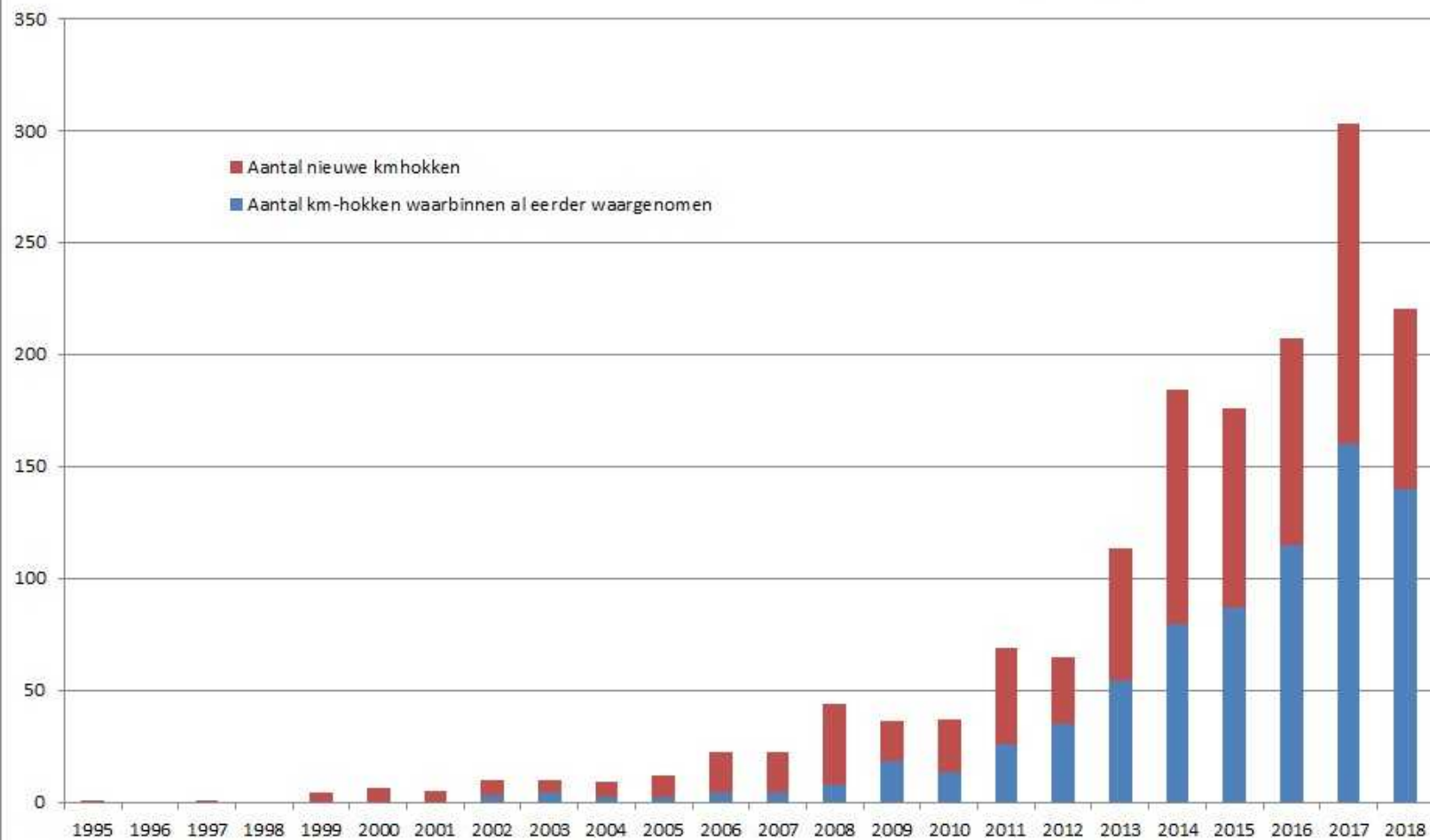






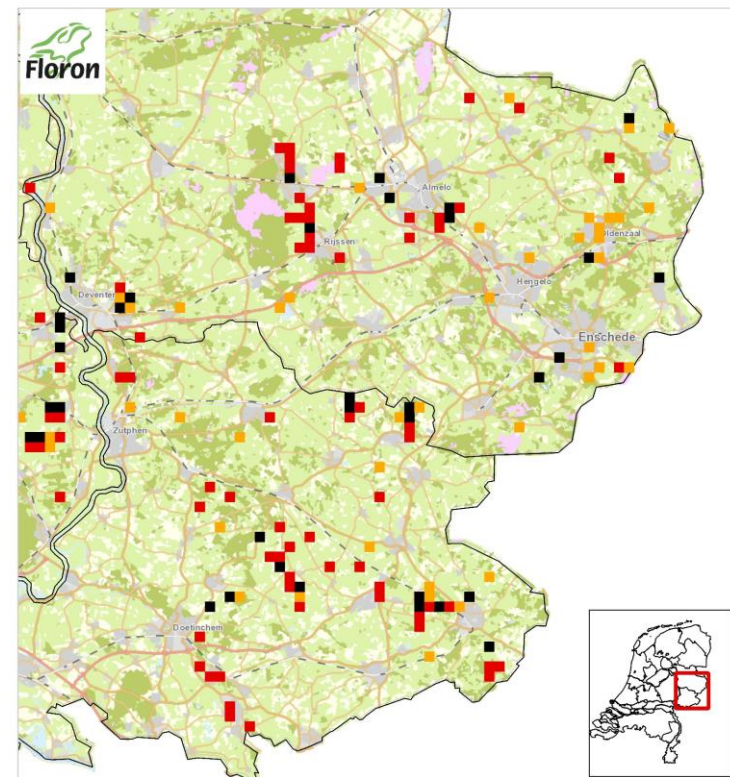
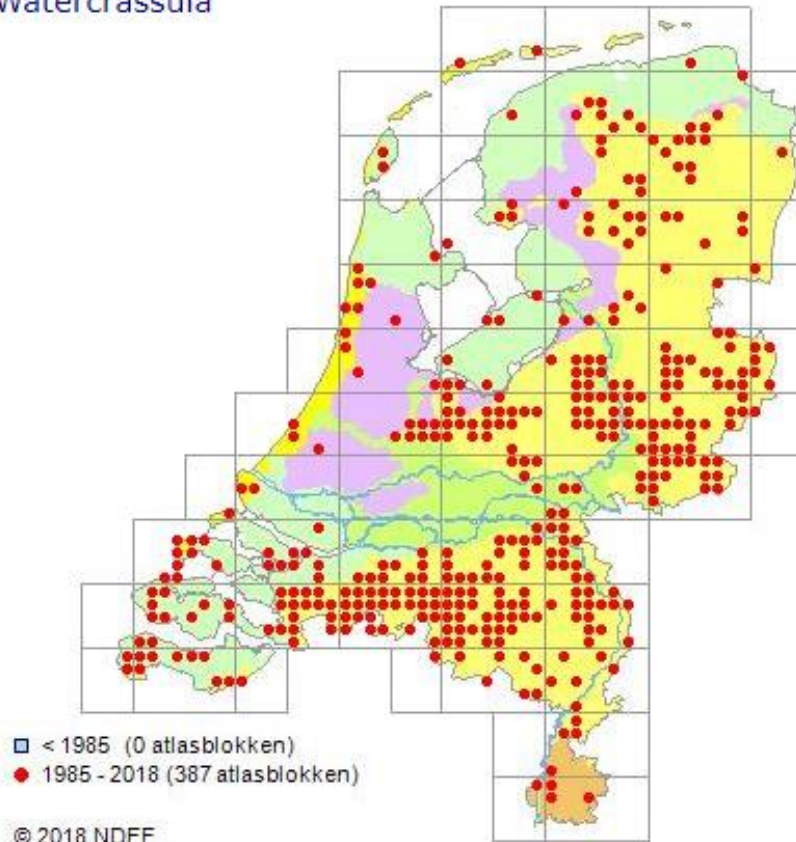
Bron:
FLORON

Aantal km-hokken met waarnemingen van Watercrassula per jaar.
bron: Nationale Databank Flora & Fauna (NDFF)



Crassula helmsii (Kirk) Cockayne

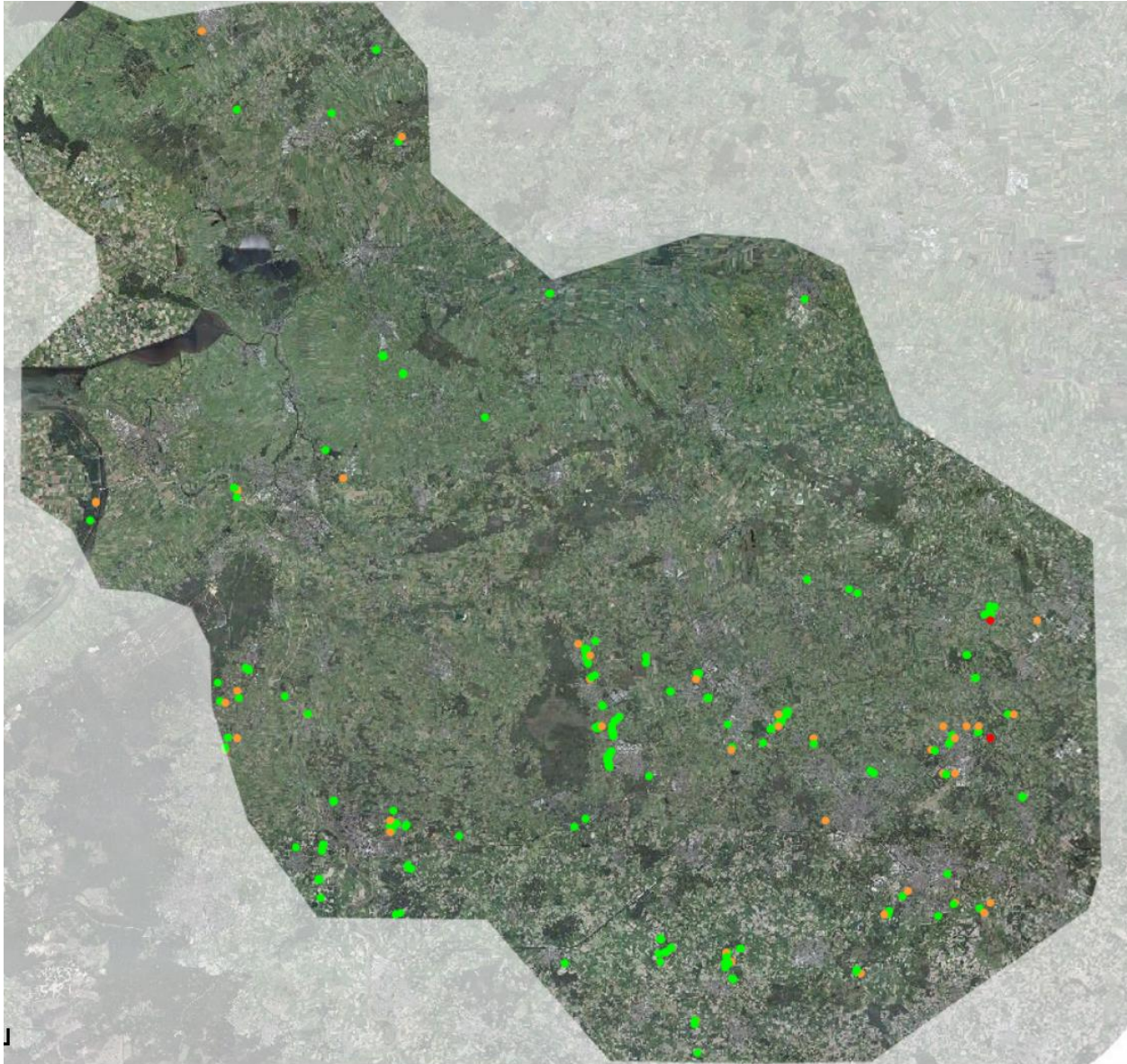
Watercrassula



Waarnemingen Watercrassula
 (bron: Nationale Databank Flora en Fauna)

NATIONALE DATABANK
 FLORA EN FAUNA





Watercrassula

- Concurrentiekracht
- Verschijnen in pioniersmileus (waterbergingen) en dicht bij urbaan gebied
- Landschap Overijssel: 6 gebieden
 - Doorbraak
 - Reggedal
 - Landgoed Stroink
 - Eeserwold
 - Wierdense Veld (randzone)
 - Aamsveen (randzone)



Dank

